



Committee and date  
Council  
22<sup>nd</sup> September 2011  
  
10 am

Item  
  
**18**  
  
Public

## **Crime Reduction, Community Safety and Drug & Alcohol Strategy 2011 - 2014**

**Responsible Officer** Paul McCreary, Group Manager Public Protection and Enforcement

Email: paul.mcgreary@shropshire.gov.uk      Tel: 253868      Fax:

---

### **1. Summary**

The Safer Stronger Communities Partnership (Shropshire's Community Safety Partnership) is required, by the Crime and Disorder Act 1998, to produce a three year Crime Reduction, Community Safety and Drug & Alcohol Strategy. The aim of the Strategy is to set out the key priorities for the Partnership.

The Strategy is based on a Strategic Assessment, which is undertaken on an annual basis, and allows the Partnership to identify any changes in local crime types and whether they have increased or decreased. It also enables the Partnership to identify any emerging 'vulnerable' localities which require extra resources to address emerging issues around crime, community safety, ASB etc.

### **2. Recommendations**

Cabinet is asked to endorse the Crime Reduction, Community Safety, and Drug & Alcohol Strategy 2011-2014 on behalf of Shropshire Council.

## REPORT

### 3. Risk Assessment and Opportunities Appraisal

The Strategy is based on the Strategic Assessment which is undertaken every twelve months and measures any changes in crime and disorder at both a County, and local level. The Strategy is reviewed every twelve months and any alterations to the delivery of projects, or reallocation of funding, is made based on Strategic Assessment and discussions with partners. This includes responses to crime and disorder at a neighbourhood level.

### 4. Financial Implications

The Safer Stronger Communities Partnership currently receives funding from the Home Office which it allocates to support interventions and projects to tackle crime, disorder and substance and alcohol misuse.

### 5. Background

In its document entitled 'New Approach to Fighting Crime' published in March 2011, the Coalition Government identified Community Safety Partnerships (CSP's) as the venue where decisions should be taken about how to tackle those crime issues that matter most, locally. It suggested that the role of CSP's should be to make sure that offenders are properly targeted, that victims are supported effectively, local public spaces are safe, and that local partners are working together to address local issues. Based on information and data contained in the Strategic Assessment the Strategy not only addresses some of the proposed areas of work made by the Government of what CSP's should be doing, but also continues to respond to those issues that are long term concerns for local people. The four key priorities for the next three years are:

#### Reducing Offending & Re-offending

The Home Office and Ministry of Justice identified that *"....more than 50 per cent of offences are committed by offenders who have already been through the criminal justice system, reducing re-offending is fundamental to cutting crime and making local communities safer."* The Route 7 project aims to provide support to individuals in order for them to reduce their re-offending; for agencies to intervene where necessary to ensure offenders comply with any requirements; and, where necessary support enforcement action for those who continue to offend.

#### Supporting Vulnerable People

##### I. *Domestic Violence:*

National statistics estimate that 1 in 4 women experience abuse or violence from a partner at some time within their adult lives. The Partnership works with a wide range of agencies not only to prevent domestic abuse, but also reduce the risk of domestic abuse occurring, and by supporting the victims of domestic abuse.

##### II. *Anti-social behaviour:*

The Partnership recognises that anti-social behaviour can blight the lives of communities and effect perceptions of safety and security within individual's own homes as well as on the streets. In order to address anti-social behaviour and make the reporting of ASB easier, the Partnership has established a single reporting number so that members of the public only have to report problems

once. To support the number a small, Co-located Team has been established which consists of officers from the Council, Police and a Registered Housing provider, that will co-ordinate multi agency responses to ASB, deal with perpetrators and support victims.

III. *Hate crime:*

Hate crime is commonly associated with prejudice against particular individuals such as those from minority ethnic groups or hatred based on homophobia. A more accurate definition of hate crime is any crime where prejudice against an identifiable group is a factor in determining who is victimised. Hate crime, like domestic abuse, is an underreported crime the Partnership aims to improve reporting and increase confidence amongst victims to report hate crime.

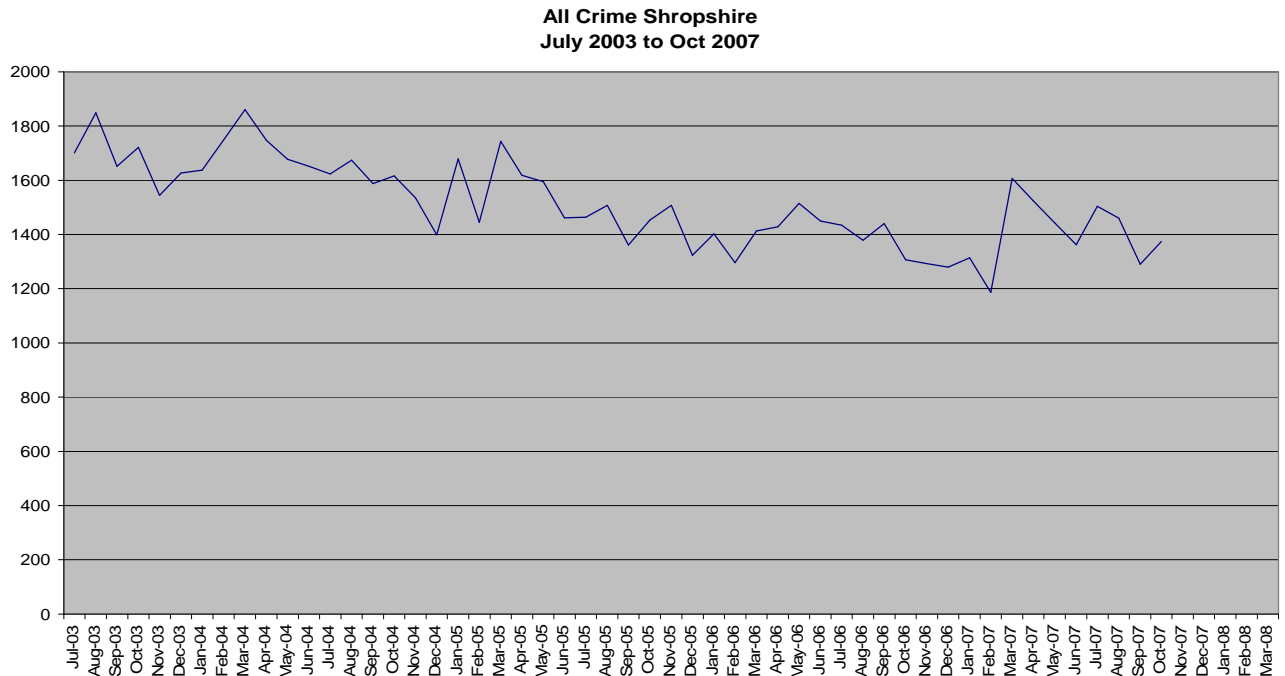
**Increasing Public Confidence**

*Acquisitive Crime:*

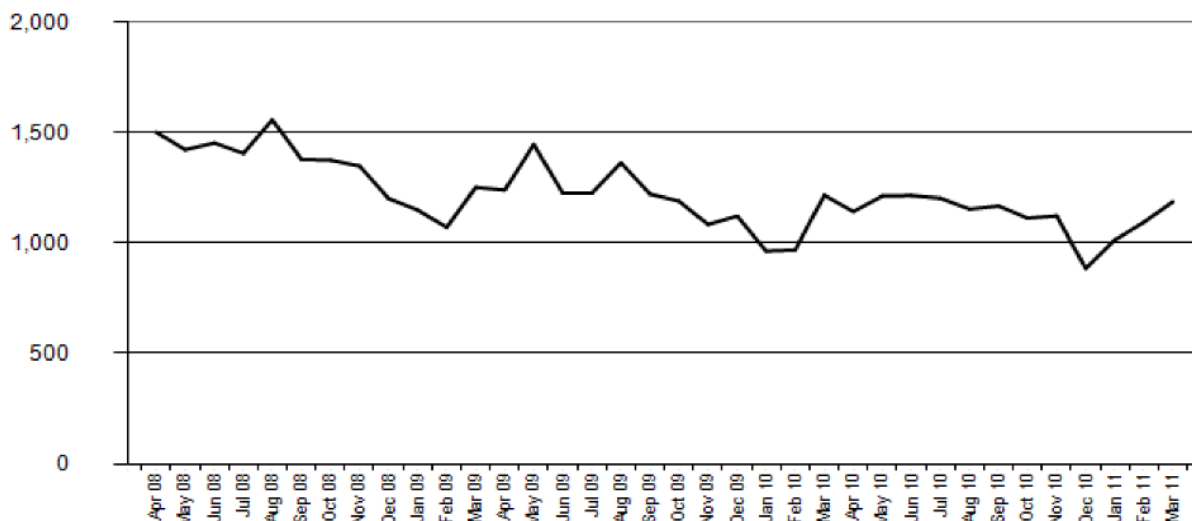
Serious Acquisitive Crime encompasses domestic burglary, vehicle crime and robbery. These crimes can be disruptive and potentially very distressing and are often the result of opportunist criminal behaviour.

*Public Perception:*

In the national and regional context, Shropshire is one of the safest places to live, work and visit. Crime has been falling in all areas of Shropshire since 2004 (see graphs below). A key challenge for the Partnership is to ensure that the reductions seen in crime and disorder are translated into feelings of safety and confidence in towns, villages and communities across the County.



**iQuanta Volume Chart - Crimes  
West Mercia - Shropshire CDRP  
All Crime  
01 Apr 2008 - 31 Mar 2011**



**Tackling Substance and Alcohol Misuse**

Drug and alcohol is a serious issue for both community safety and health organisations and practitioners. Work is undertaken by the partnership to:

- I. Reduce illicit and other harmful drug use;
- II. Increase the numbers recovering from their dependence;
- III. Respond effectively to alcohol related harm through a range of interventions.

**6. Additional Information**

Membership of the Safer Stronger Communities Partnership includes the Responsible Authorities (Shropshire Council, West Mercia Police, Shropshire PCT, West Mercia Police Authority, Shropshire Fire and Rescue Service and the Probation Service) as set out in the Crime and Disorder Act 1998. The responsible authorities develop and implement local approaches to deal with issues including crime reduction, anti social behaviour, drug or alcohol misuse and re-offending based on the strategy.

**7. Conclusions**

Crime, disorder and substance and alcohol misuse have a direct impact on both individuals and communities in Shropshire. This three-year strategy has been developed by the Safer Stronger Communities Partnership and aims to ensure that crime is tackled effectively.

**List of Background Papers (This MUST be completed for all reports, but does not include items containing exempt or confidential information)**

**Cabinet Member (Portfolio Holder)**

**Councillor Steve Charmley**

**Local Member**

**Appendices: Crime Reduction, Community Safety and Drug and Alcohol Strategy 2011 - 2014**